

PIANO OPERATIVO
ai sensi della LR 65/2014

Comune di Rapolano Terme
Alessandro Starnini *Sindaco*
Elisa Morbidelli *Assessore all'Urbanistica*

Responsabile del procedimento
Sauro Malentacchi

Garante dell'informazione e Partecipazione
Marco Anselmi

Ufficio di piano
Gabriele Giardini

Progettazione Urbanistica – Valutazione Ambientale Strategica
Laura Tavanti

Collaboratori alla progettazione
Silvia Bertocci
Desirè Gambini
Patrizia Sodi











TAV.06 A


AVVIO DEL PROCEDIMENTO

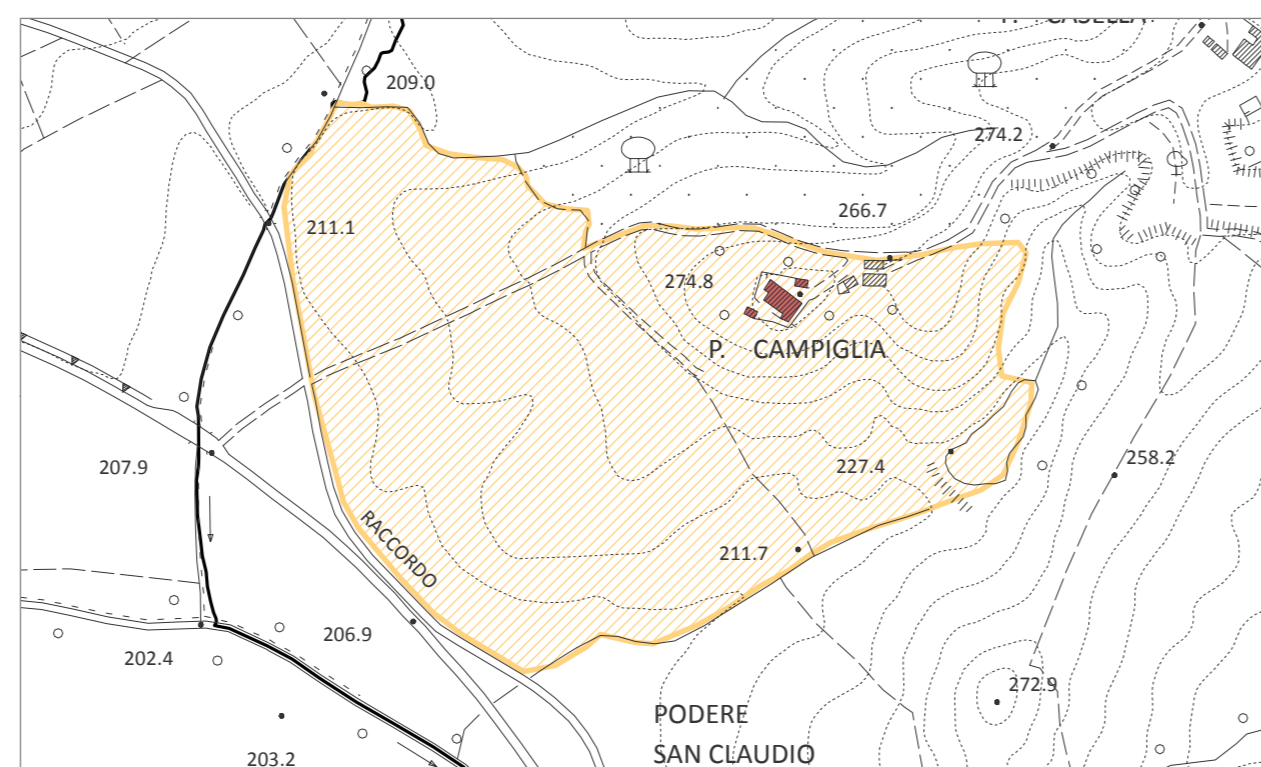
Scala 1:5.000

Individuazione dei nuclei storici e dei relativi ambiti di pertinenza:
Podere Campiglia, La Palmiera, Podere Casalino, S. Biagio a Chiusella, Podere Torricella, Podere Piazzola, Pieve Vecchia, Bagni Marii, Romitorio, Santa Maria in Ferrata

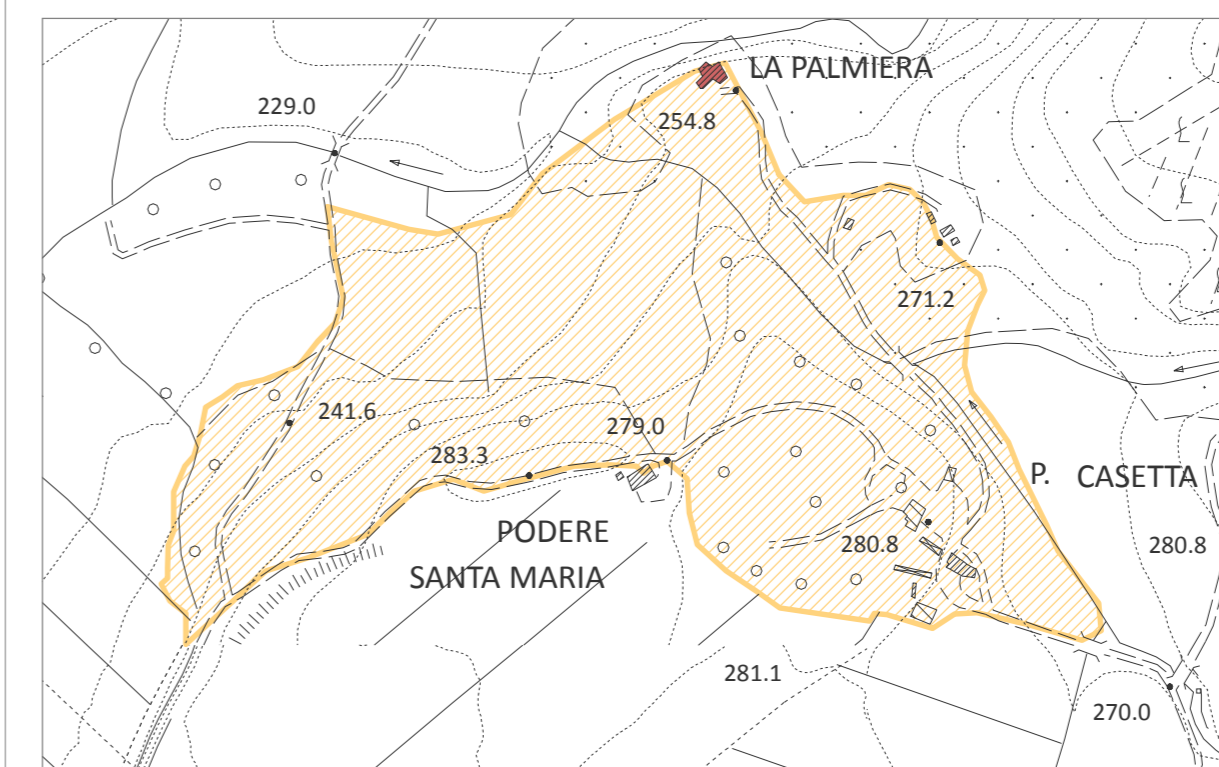
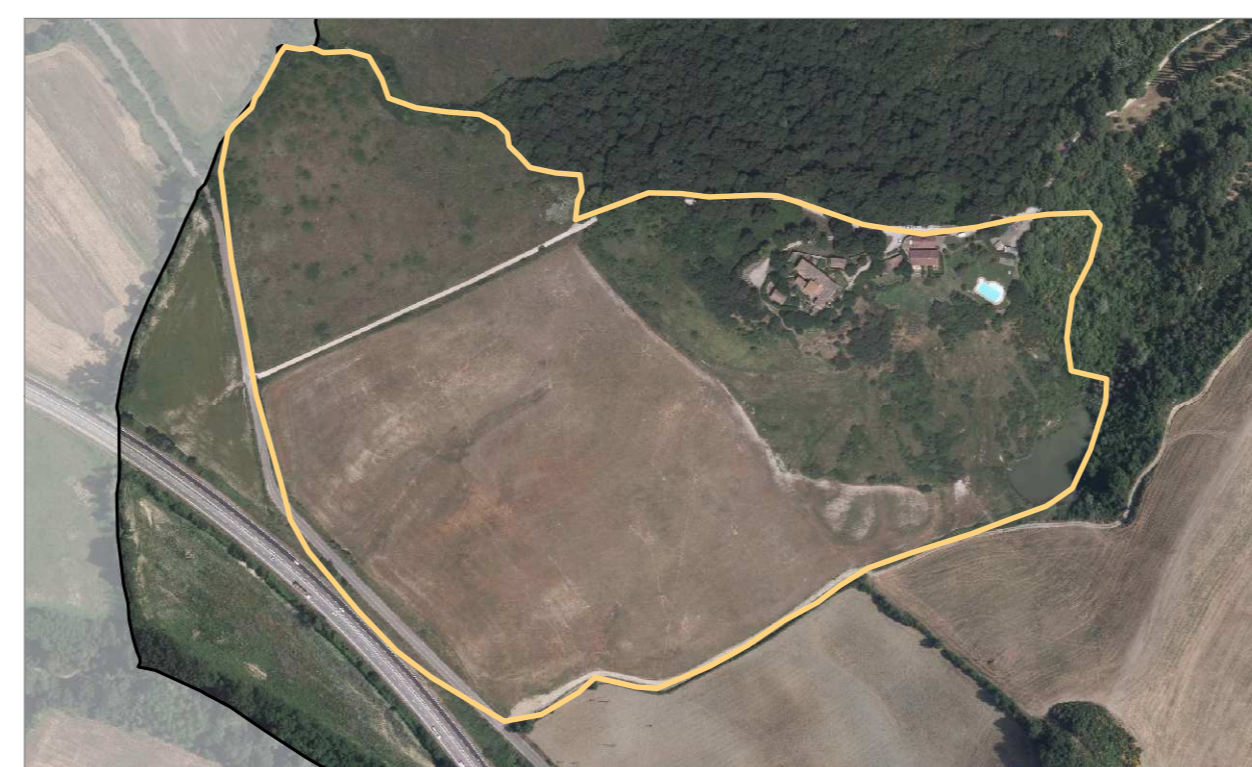
Nuclei storici art. 66 e relativi ambiti di pertinenza art. 64, comma 3, lett. a, L.R. 65/2014

-  01 - Podere Campiglia (ES)
-  02 - La Palmiera (ES)
-  03 - Podere Casalino (ES)
-  04 - San Biagio a Chiusella (ES)
-  05 - Podere Torricella (ES)
-  06 - Podere Piazzola (ES)
-  07 - Santa Maria in Ferrata (ES)
-  08 - Romitorio (ES)
-  09 - Pieve Vecchia (ES)
-  10 - Bagni Marii (ES)

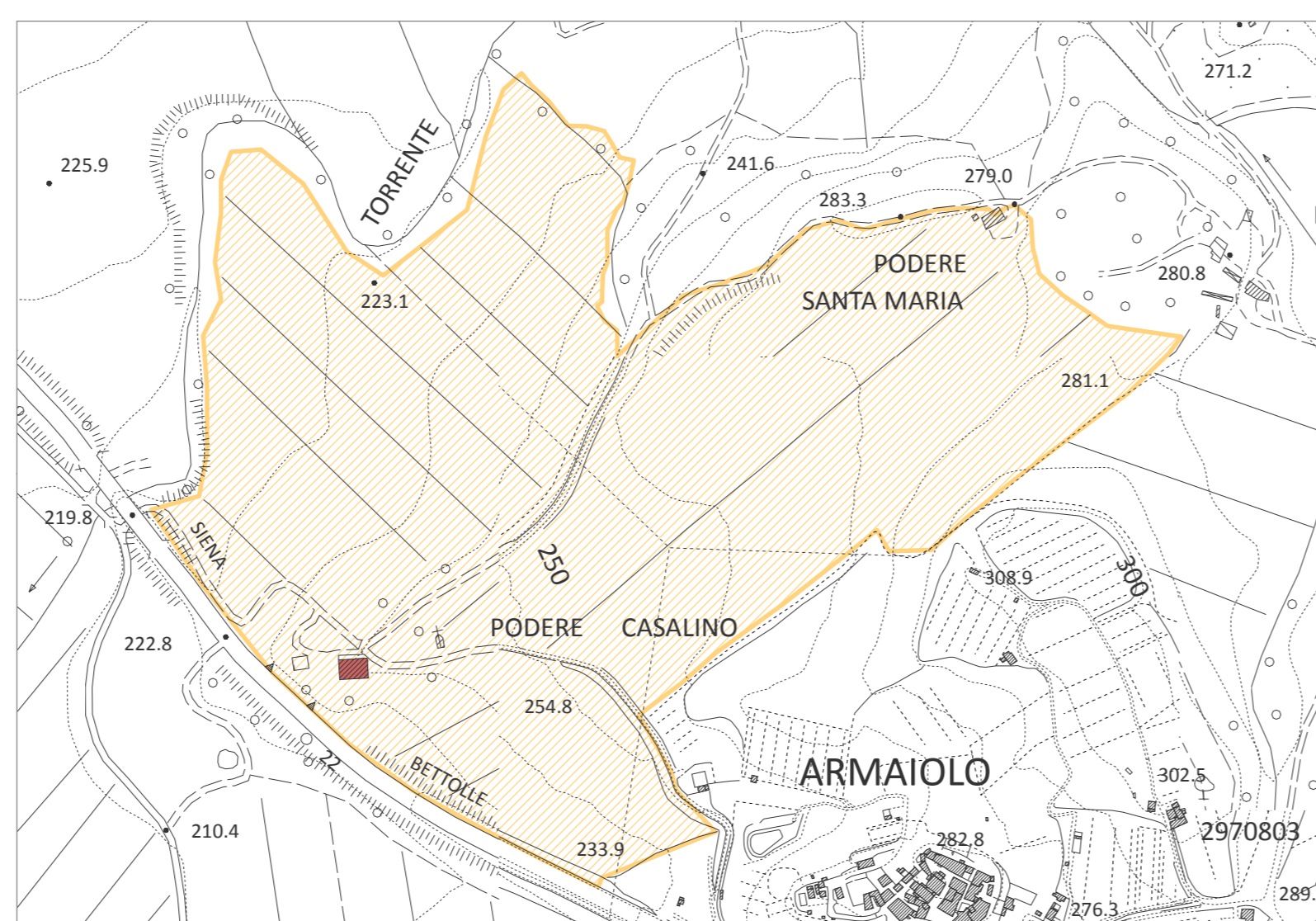
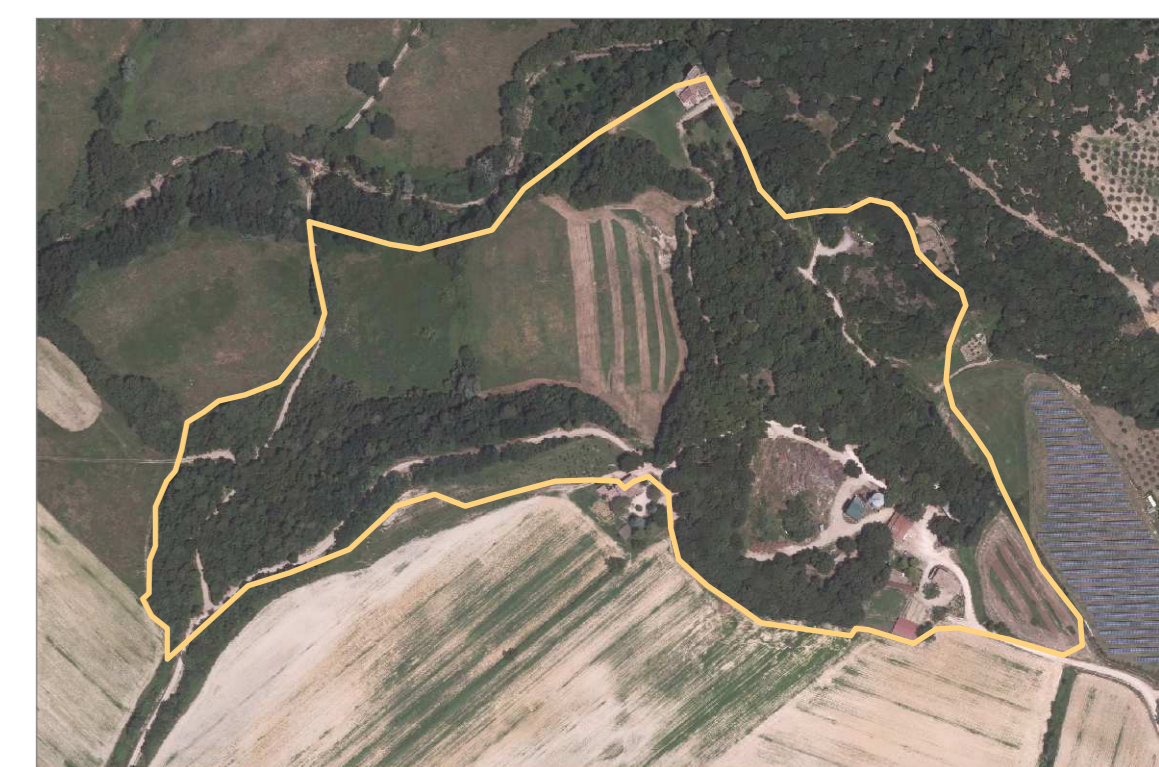
 Edificio Specialistico (ES) / Villa (V)



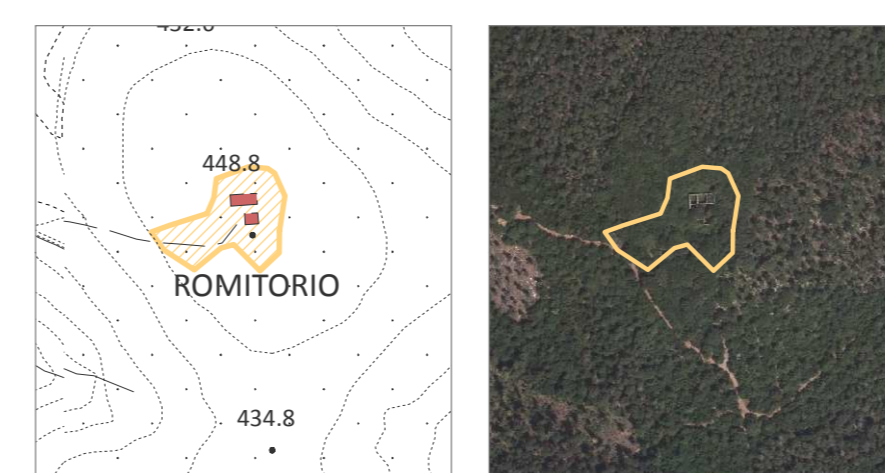
01 - Podere Campiglia



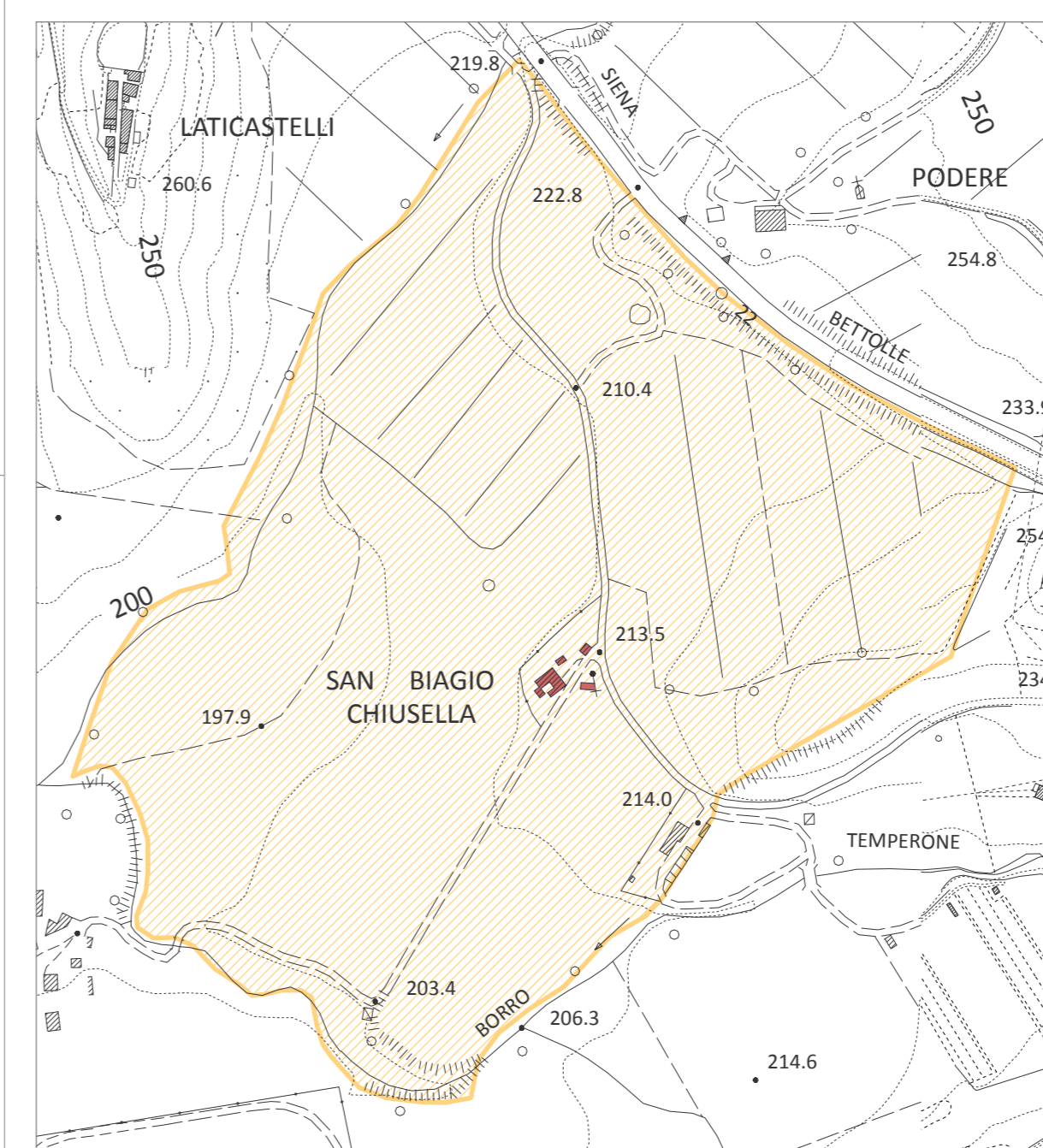
02 - La Palmiera



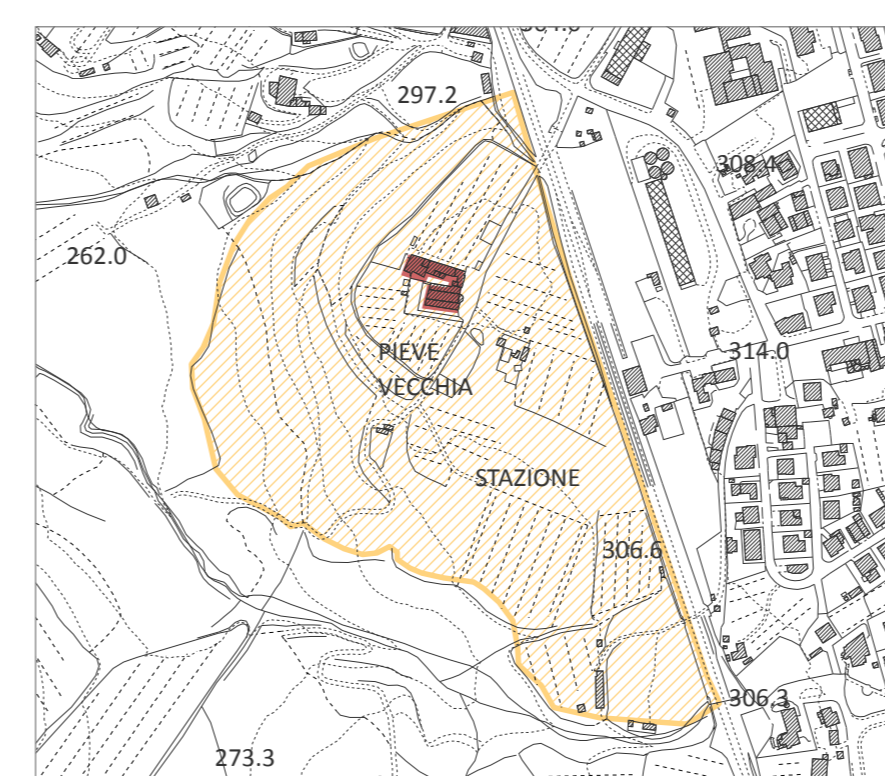
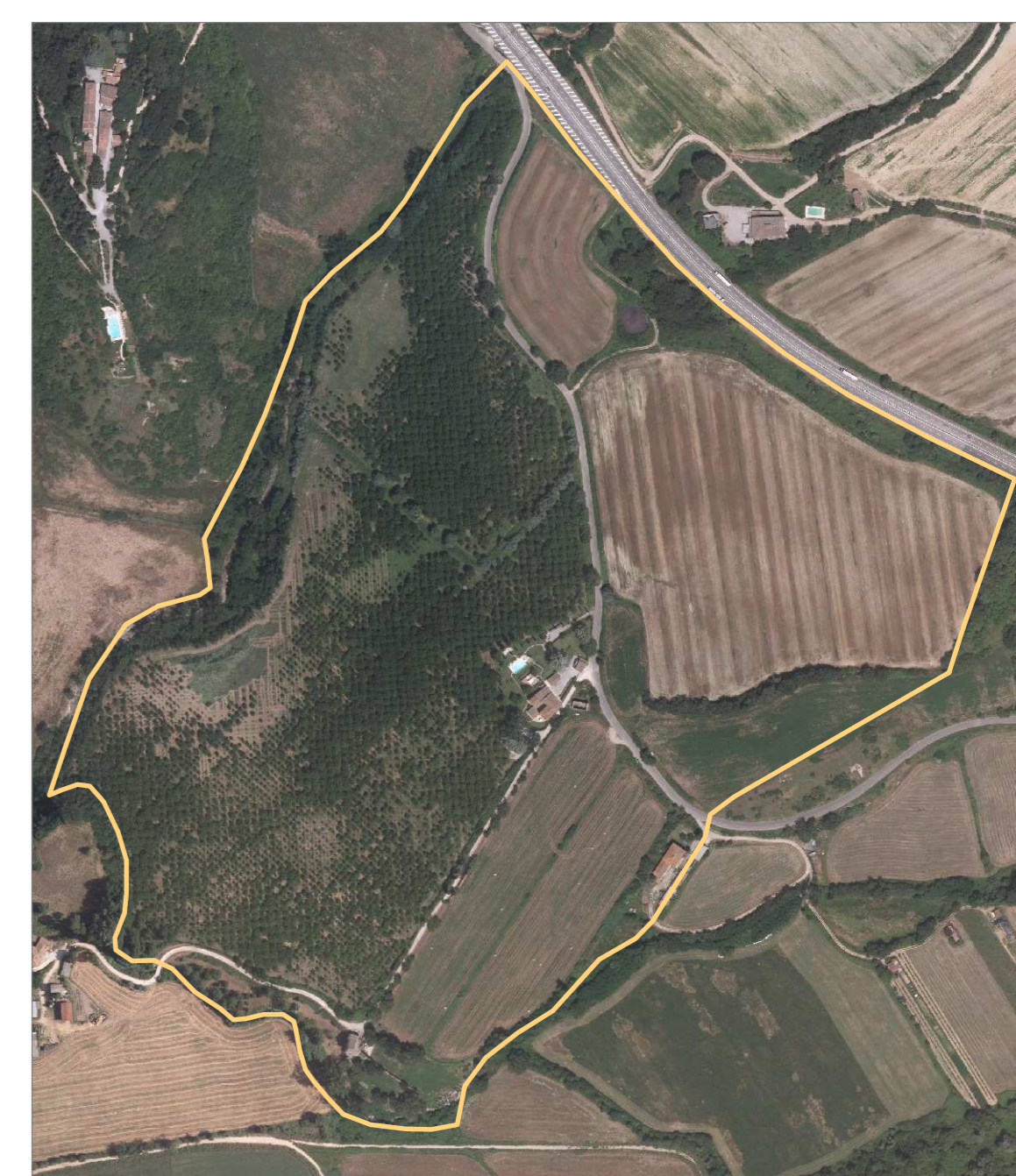
03 - Podere Casalino



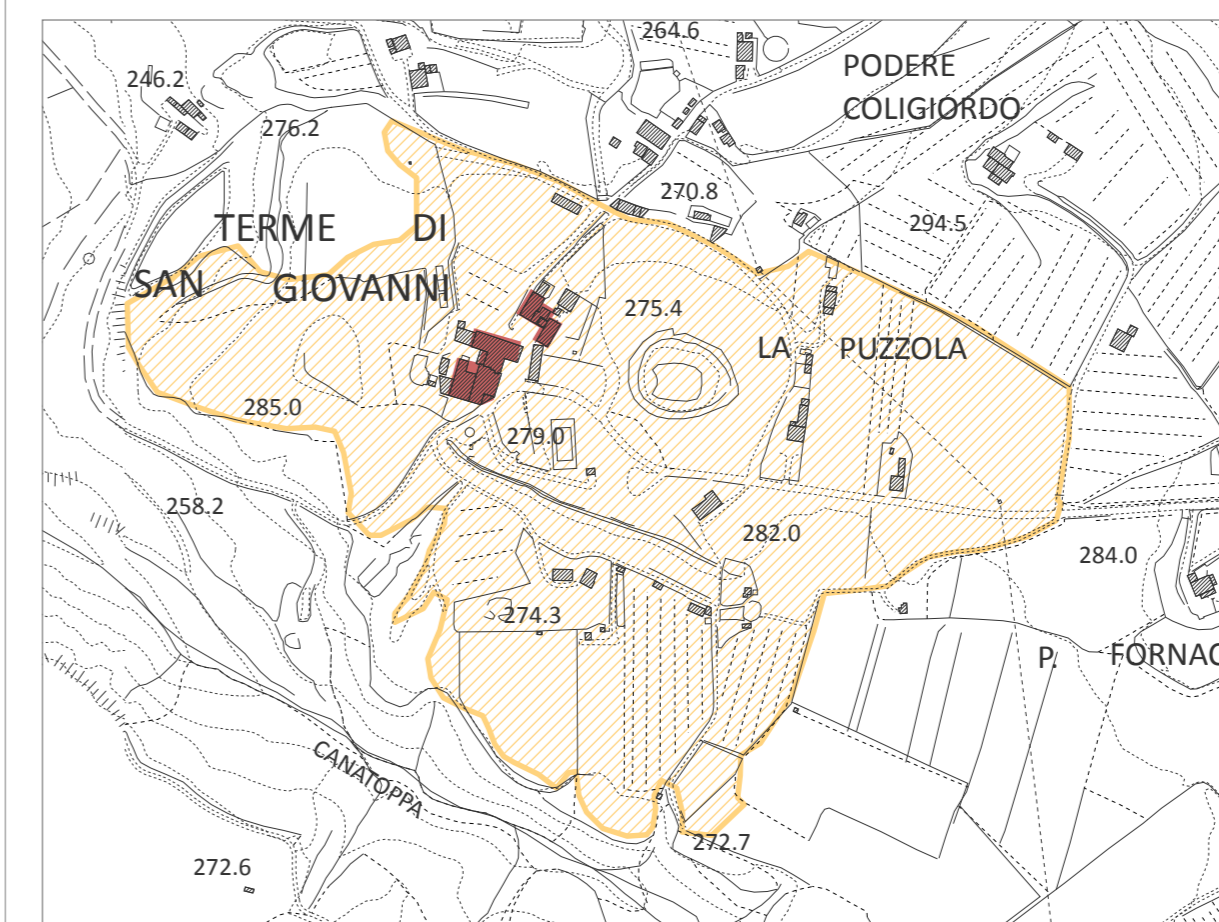
08 - Romitorio



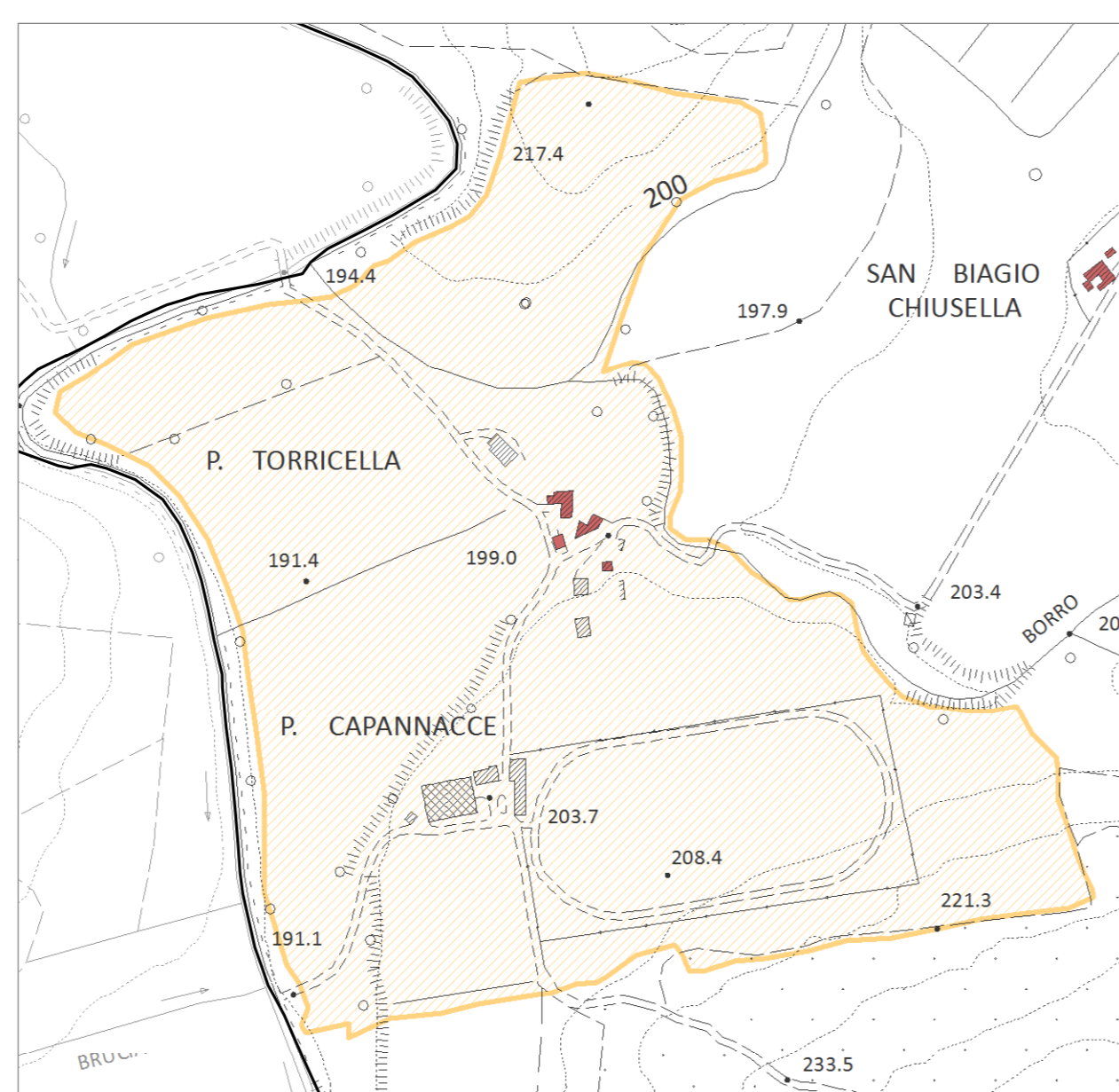
04 - San Biagio a Chiusella



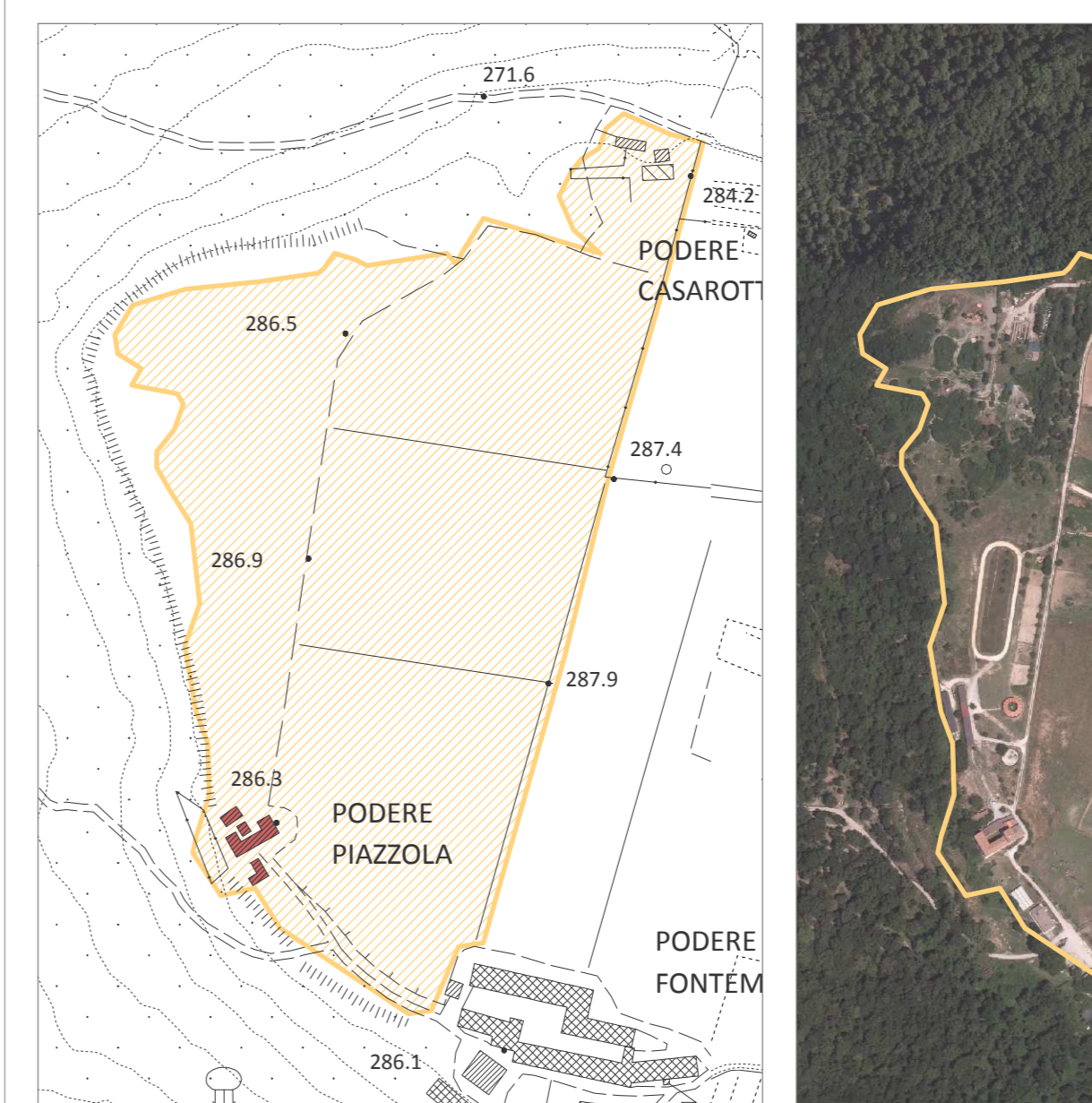
09 - Pieve Vecchia



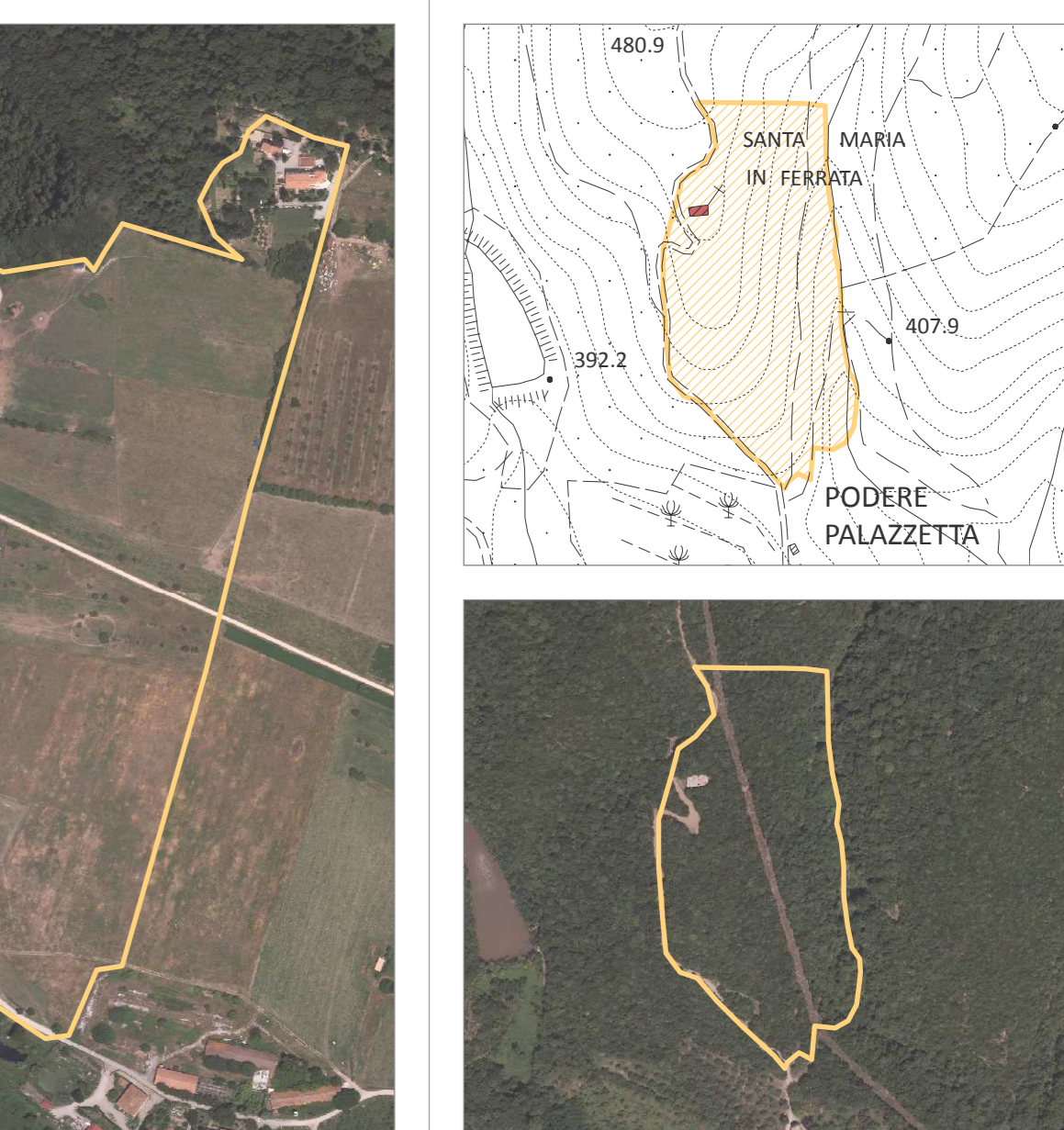
10 - Bagni Marii



05 - Podere Torricella



06 - Podere Piazzola



07 - Santa Maria in Ferrata

